

Notes

- The pet owner will need to input the **Calibration Code** located on the applicator package to activate
- Activation takes 2-3 minutes and should be completed before sending the pet home
- The **user manual** and **orange releaser clip** inside the box are for the pet owner to keep
- When choosing a location, consider the individual pet and pet owner's ability to ensure the CGM stays on.
- Consider the use of protective equipment such as clothing, harness, cone, etc.

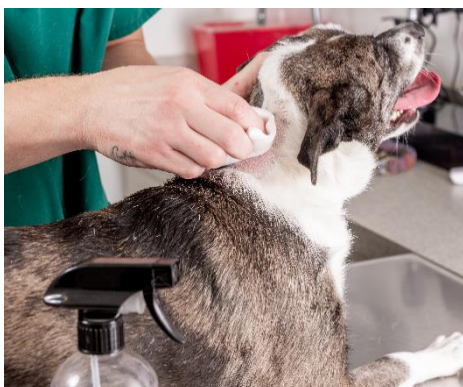
1 Step 1: Shave

Choose a location and shave a small 2 inch by 3 inch area using a 40 blade clipper



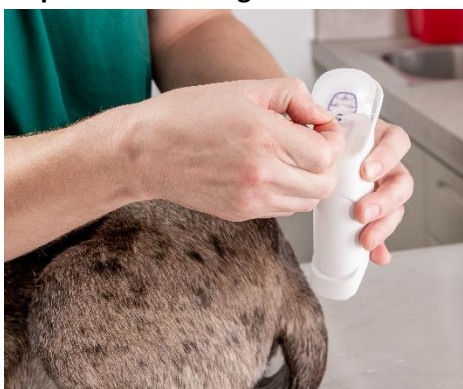
2 Step 2: Alcohol

Wipe area with alcohol and allow time to dry, the CGM must be applied to dry skin



3 Step 3: Peel

Remove protective lining from bottom of Applicator, avoid touching adhesive pad



How to: Apply the GluCurve on a pet

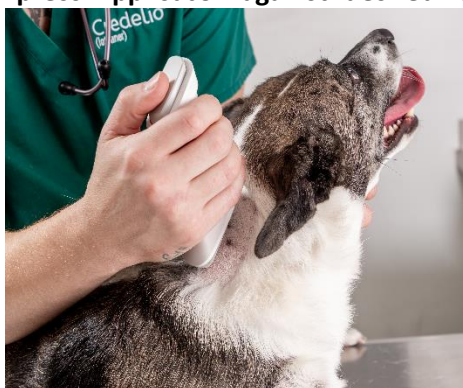
4 Step 4: Unlock

Slide orange safety lock to unlock position, ensure tab is all the way over



5 Step 5: Press Button

Firmly press Applicator against desired location, press button to deploy CGM



6 Step 6: Insert Transmitter

Insert protruding tab by the "G" in GluCurve first, then gently press the "e" side flat



Firmly press in each corner next to the hole containing a locking tab until you hear a click
It is critical that you hear two clicks, one for each tab locking in place



7 Step 7: Complete

Run fingers around adhesive pad pressing down to ensure it is firmly in place



More information

? Access the following resources for the GluCurve Pet CGM at www.GluCurve.Com/Help:

- [How to: Apply the GluCurve on a Pet](#)
- [How to: Activate the GluCurve after applying](#)
- [How to: Troubleshoot the GluCurve](#)
- [How to: Use the Veterinary Web Portal](#)
- [How to: Use the GluCurve app for iOS and Android](#)
- [Help Videos](#)
- [FAQs and More](#)